

**Agenda Item 8**

**Health and Adult Social Care Scrutiny Board**

**18 June, 2015**

**Appointment of Members to Workstreams**

**1. Summary Statement**

**1.1** At its meeting on 26 May, 2015 the Council agreed terms of reference for Health and Adult Social Care Scrutiny Board. These are attached as Appendix A to this report.

**1.2** These terms of reference establish three 'workstreams' that will conduct scrutiny. These workstreams are:-

- NHS;
- Partnerships and Integration
- Right Care, Right Here

**1.3** The NHS work stream has been dealt with under Item 7 of this agenda.

**2. Recommendations**

(1) That the Board determine the membership of the following workstreams:

- (a) Partnerships and Integration;
- (b) Right Care, Right Here.

**Neeraj Sharma**  
**Director – Governance**

**Contact details**  
Sarah Sprung  
Scrutiny Lead  
Governance Services  
0121 569 3200

## **Health and Adult Social Care Scrutiny Board**

### **Terms of Reference**

#### **1. Scrutiny – Overall Statement of Purpose**

- 1.1 Scrutiny in Sandwell has a key role in delivering local accountability, transparency and involvement in decision making and the achievement of Sandwell's scorecard priorities. It will:-
- (i) contribute to the good governance, reputation and performance of the Council;
  - (ii) contribute to the development, review and implementation of scorecard priorities and policy through early involvement in pre-decision scrutiny and through undertaking specific pieces of research and investigation;
  - (iii) continue to develop a borough-wide focus particularly through its relationship and statutory role in respect of key partners, including Joint Committees;
  - (iv) consider a wide range of evidence, views and opinions, promote good governance and decision making and improve confidence and involvement with local democracy.

#### **2. Terms of Reference**

- 2.1 to be responsible for the overview and scrutiny of all health related issues, including liaison with NHS Trusts, Clinical Commissioning Groups (CCGs), Health and Well Being Board and Health Watch;
- 2.2 to have the powers of overview and scrutiny in relation to all functions of the Council contained in the National Health Service Act 2006, to all regulations and directions made under the Health and Social Care Act 2001, the Local Authority (Overview and Scrutiny Committees Health Scrutiny Functions) Regulations 2002, the Health and Social Care Act 2012 and related regulations;
- 2.3 to make reports and recommendations to relevant NHS bodies, relevant health service providers and commissioners, the Secretary of State or Regulators;

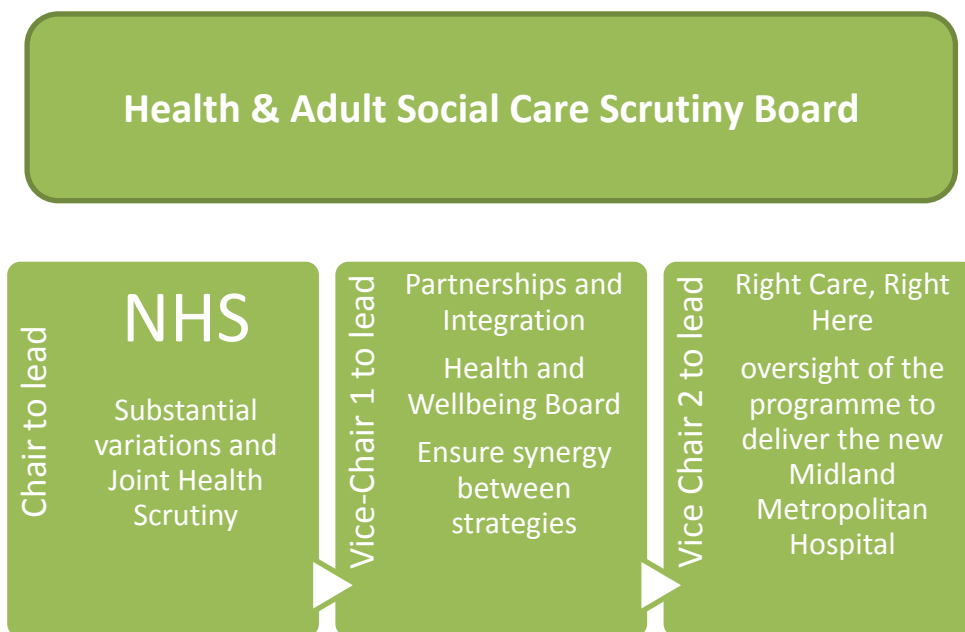
- 2.4 to be responsible for initiating the response to any formal consultation undertaken by relevant NHS Trusts and CCGs or other health providers or commissioners on any substantial development or variation in services;
- 2.5 to participate with other relevant neighbouring local authorities in any joint scrutiny arrangements of NHS Trusts providing cross-border services.
- 2.6 The Health and Adult Social Care Scrutiny Board will have the power to refer a proposed substantial variation in service delivery to the Secretary of State. If the Board wish to exercise this power then this must be agreed by the Chairman of the Scrutiny Board who will hold the power of veto in respect of any proposed referral of a substantial variation to the Secretary of State.
- 2.7 To review and scrutinise the decisions made or actions of the Health and Well-being Board.
- 2.8 As set out in the scrutiny procedure rules, to scrutinise recommendations, consider referrals under the Call for Action and the Pre-Decision Scrutiny (Call in) processes and review and advise on the Council's policies and practices in respect of, and upon such terms as are set out below:-
  - (a) Adult social care transformation programme;
  - (b) Better care fund;
  - (c) whole life services for people with disabilities and/or learning disabilities;
  - (d) local safeguarding arrangements for adults;
  - (e) services for older and vulnerable adults;

### **3. General Role**

- 3.1 In relation to the above terms of reference the Scrutiny Board will:-
  - (a) develop a work programme for scrutiny of the functions of the Council and partners relating to health and adult social care;
  - (b) to use the scrutiny scoring matrix to establish suitable themes for investigation and areas for further scrutiny;
  - (c) review or scrutinise the exercise of any Council or Executive, or any other related matter;

- (d) make reports or recommendations to Council or the Executive in connection with the exercise of any functions of the Council or the Executive;
- (e) receive and review external audit and inspection reports;
- (f) act as the appropriate Scrutiny Board in relation to the Executive's initial proposals for a plan or strategy within the Budget and Policy Framework;
- (g) review outcomes, targets and priorities within the Sandwell Scorecard and to make such reports and recommendations as it considers appropriate;
- (h) review or scrutinise executive decisions made but not implemented;
- (i) receive and monitor formal responses to any reports or recommendations made by the Board.
- (ii) Hold commissions and providers of health services to account.

In order to fulfil the requirements of the terms of reference the following structure will apply to the Board:-



The Chair of the Health & Adult Social Care Scrutiny Board will lead the work of the Board, in particular any substantial variations put forward by health care providers and/or commissioners.

The Chair will lead the Joint Scrutiny arrangements with both Birmingham City Council and Wolverhampton City Council for which the Board will nominate a total of five members.

### **Vice Chair One**

The Vice Chair (one) will lead the work stream on Partnerships and Integration.

The work stream will have responsibility for scrutinising the following:-

- (1) Sandwell Health and Wellbeing Board;
- (2) Monitoring the synergy between Council and health agency strategies, and their ability to deliver the priorities contained in the Joint Health and Wellbeing Strategy;
- (3) The Better Care Fund.
- (4) Integration of services between health and social care, including mental health.

The Board will appoint four members (in addition to the Vice Chair) to sit on this work stream group.

### **Right Care, Right Here**

The Vice Chair (two) will lead this work stream on Right Care, Right Here, the programme to deliver the new Midland Metropolitan Hospital, and supporting health care arrangements.

The work stream group will scrutinise all elements of the Right Care, Right Here Programme.

Each of the Work Streams will report to the Health and Adult Social Care Scrutiny Board at regular intervals.

The Board will appoint four members (in addition to the Vice Chair) to sit on this work stream group.